

# COVID Screening Platform

#WindsorStrong

Phase 2 - Process Overview

## Improve Screening for COVID-19 to help open our campus in the future.

A weekly non-diagnostic saliva COVID-19 test from May 31 – August 7  
Open to researchers/students in Dept. Biomedical Sciences; Chemistry and Biochemistry; Physics; Human Kinetics and UWindsor staff  
Saliva samples are pooled with 4, 8, or 12 individuals

Approved by the Office of the President, Office of the VPRI, Faculty of Science, and Health and Safety

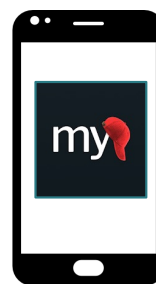
Consent Form: <https://redcap.link/UWindsorCOVID-19ScreeningStudy>

### Participant Recruitment

- Voluntary Participation and Withdrawal
- Fill in e-Consent form and onboarding survey (Link located above)
- Participants are 'de-identified' and given a personal MyCap QR code
- A mobile app, MyCap, will be used to communicate with participants directly
- Each participant will be given swab instructions and safety guidelines



Fill in e-consent form and onboarding survey



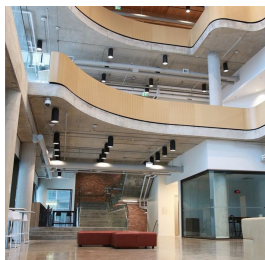
Download MyCap application



Scan your QR code on MyCap

### Sample Collection

- 1 test per week per participant
- Complete a 2-minute survey on MyCap
- Collection sites will be manned by a technician who will guide participants through the procedure
  - Currently in the CORE building
  - Operating Hours on next page



Go to the collection site once a week



Complete survey on MyCap



Collect own saliva sample and store in tube

### Sample Transport

- Participants will place their own sample in a cold block
- Transport to UWindsor lab on the 3<sup>rd</sup> floor of Essex-CORE for sample processing



Sample refrigerated to keep the sample safe



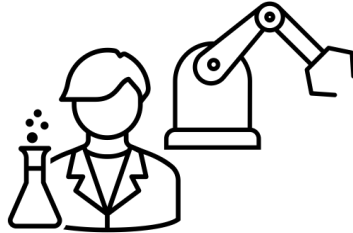
Sample Transported Securely for Processing

# COVID Screening Platform

#WindsorStrong

## Sample Processing

- Manual and Robot will sample pooling and prep
- 4, 8 or 12 samples pooled
- Analysis by qPCR provided by our industrial partner, SM Research Inc.



Manual and Robot Sample Processing



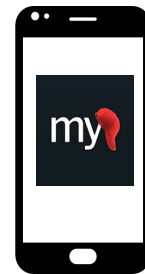
qPCR Analysis

## Reporting to Participants

- Participants in positive cohorts will be alerted & invited to retest
- Individual testing will be conducted
- Positive individual test. Advised to:
  - 1) isolate
  - 2) alert supervisor
- Participants will be given information on clinical testing sites.



qPCR Report

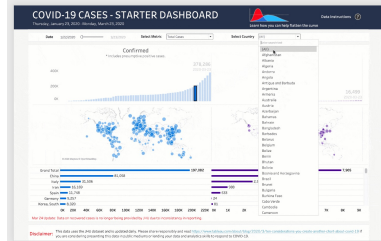


POSITIVE Cohorts Notified

Participants found to be within a positive cohort will be notified and advised to 1) isolate and 2) to get tested at a clinical test site (information provided)

## Reporting to the Public

- Dashboard of the screening study and wastewater is on <https://www.wesparkhealth.com/covid-screening-platform>
- Survey data will be collected to assess compliance, participant concerns/satisfaction and perception of risk

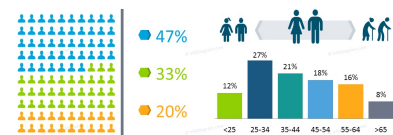


Dashboard Development

- UWindsor data
- Wastewater data
- weCHU data

## Survey Report Template

Editable PowerPoint Diagrams & Icons



Survey Data Analyzed

Participant responses will guide modifications in subsequent phases and will be written for publication

Operating Hours of Collection Sites  
**Tuesdays, Wednesdays, and Thursdays**  
**10 AM – 12 PM**  
**2 PM – 4 PM**

Your participation is completely voluntary, and you may withdraw at any time.

\*\*\* This is not a Health Canada approved test. The results provided should not be held to the same standard as a clinical diagnostic test. Still, a clinical trial was conducted at the Windsor Regional Hospital with promising data of this test's sensitivity and specificity. A negative test result does not completely rule out COVID-19 infection. Individuals may come into contact with the virus at any time and may be incubating an early infection that this testing cannot detect.



[wesparkhealth.com/covid-screening-platform](https://wesparkhealth.com/covid-screening-platform)

To participate in the study, contact:

**Jackie Fong – Study Manager**

[jfong111@uwindsor.ca](mailto:jfong111@uwindsor.ca)

For any concerns or questions, contact **Dr. Lisa Porter**

[lporter@uwindsor.ca](mailto:lporter@uwindsor.ca)

# COVID Screening Platform

#WindsorStrong

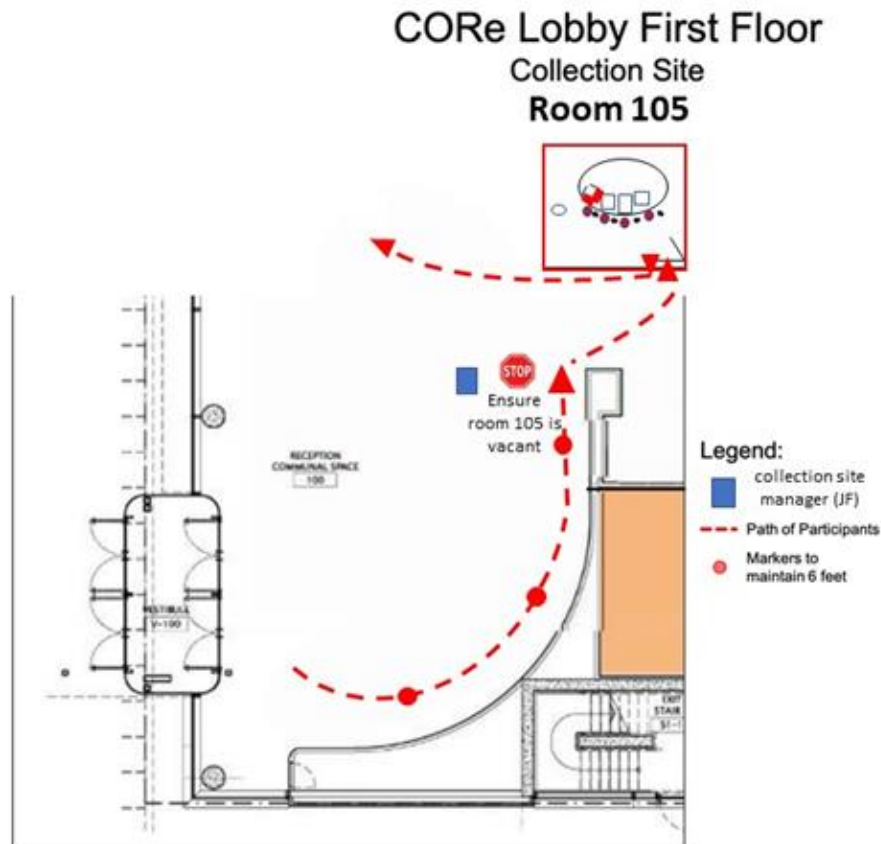
## Safety Protocol – Sample Collection

Pre-Sample Collection Instructions.

- Drink water 60 minutes before arrival to ensure enough saliva production.
- Do not drink, chew gum, or eat 30 min before sample collection.

At the Collection Site (COrE Room 105).

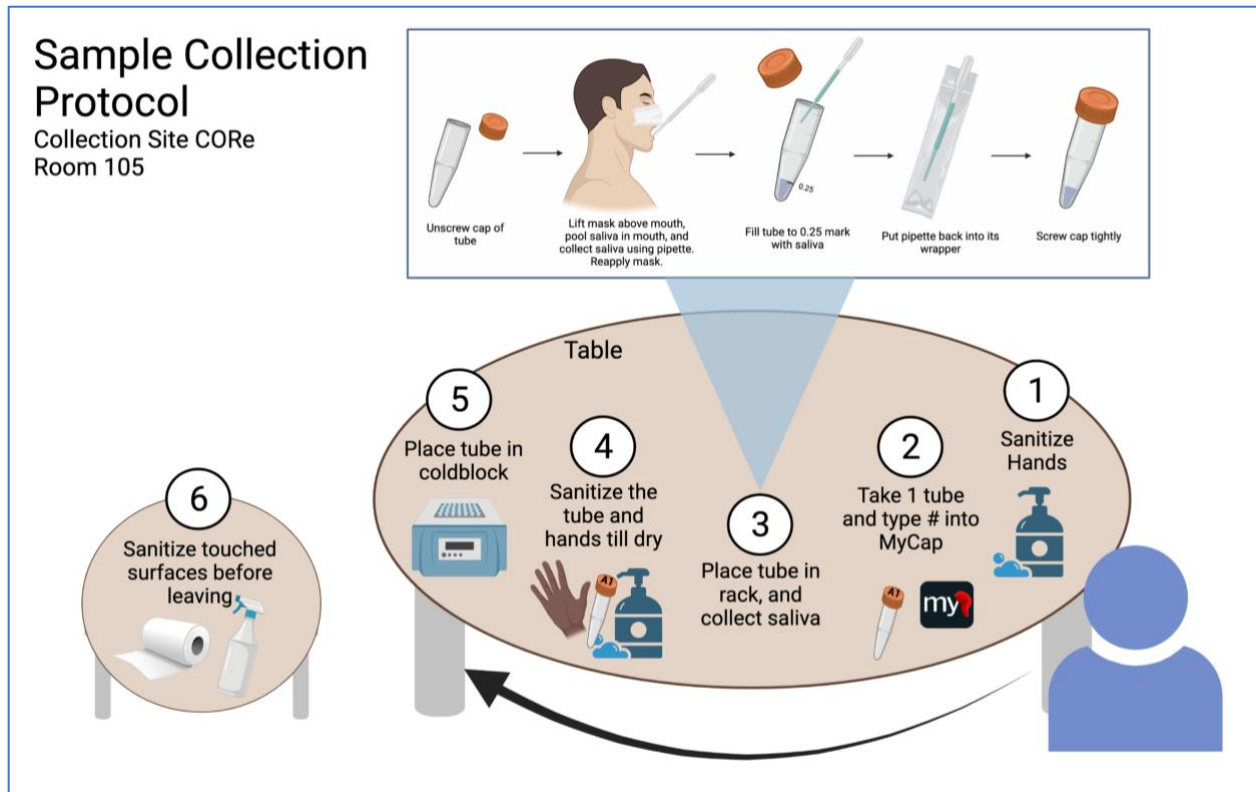
The Collection Site manager will oversee the collection site, directing and monitoring the procedures from the outside of room 105. The participants will be asked to arrive wearing a 3-ply face mask on the way to the collection site, follow zone and the designated traffic flow, remain at least 6 feet away if anyone is already at the location (there will be markers on the floor in case a line up occurs). Fill in the survey on MyCap as you wait. The participants will be informed to present the Safe Lancer App status and to confirm they followed the instructions prior to sample collection to the manager, always maintaining social distance.



# COVID Screening Platform

#WindsorStrong

Enter the room 105 using the accessibility button, and follow the stations 1-6, labeled with provided instructions:



Created with BioRender.com

1. Sanitize hands.
2. Take one tube and input Tube # into the MyCap phone application.
3. Place the tube in the rack. Pool the saliva in your mouth. To collect your sample: raise your mask above your mouth while keeping your nose covered. Unwrap the transfer pipet and squeeze the bulb to suck saliva from your mouth. Before removing the swab from your mouth, pick up and unscrew the tube, place the swab inside. Close the tube tightly. Reapply your mask and place the pipet back into the wrapper and discard
4. Sanitize your hands and the tube.
5. Place the dry tube inside the cold block.
6. Use hand sanitizer to sanitize your hands and wipe the surfaces you touched using provided solutions.